



Title Plan - LT 624962

Survey Number LT 624962
Surveyor Reference W6000 - Koreke Rise
Surveyor Kim Marie Botting
Survey Firm Paterson Pitts Limited Partnership (Wanaka)
Surveyor Declaration

Survey Details

Dataset Description Lots 1-89 and 100-102 being a subdivision of Lot 2 568764
Status Initiated
Land District Otago **Survey Class** Class A
Submitted Date **Survey Approval Date**
Deposit Date

Territorial Authorities

Queenstown-Lakes District

Comprised In

RT 1023391
RT 889185

Created Parcels

Parcels	Parcel Intent	Area	RT Reference
Lot 1 Deposited Plan 624962	Fee Simple Title	0.0750 Ha	1270102
Lot 2 Deposited Plan 624962	Fee Simple Title	0.0750 Ha	1270103
Lot 3 Deposited Plan 624962	Fee Simple Title	0.0750 Ha	1270104
Lot 4 Deposited Plan 624962	Fee Simple Title	0.0750 Ha	1270105
Lot 5 Deposited Plan 624962	Fee Simple Title	0.0750 Ha	1270106
Lot 6 Deposited Plan 624962	Fee Simple Title	0.0750 Ha	1270107
Lot 7 Deposited Plan 624962	Fee Simple Title	0.0751 Ha	1270108
Lot 8 Deposited Plan 624962	Fee Simple Title	0.0752 Ha	1270109
Lot 9 Deposited Plan 624962	Fee Simple Title	0.0800 Ha	1270110
Lot 10 Deposited Plan 624962	Fee Simple Title	0.0801 Ha	1270111
Lot 11 Deposited Plan 624962	Fee Simple Title	0.0803 Ha	1270112
Lot 12 Deposited Plan 624962	Fee Simple Title	0.0829 Ha	1270113
Lot 13 Deposited Plan 624962	Fee Simple Title	0.0805 Ha	1270114
Lot 14 Deposited Plan 624962	Fee Simple Title	0.0806 Ha	1270115
Lot 15 Deposited Plan 624962	Fee Simple Title	0.0806 Ha	1270116
Lot 16 Deposited Plan 624962	Fee Simple Title	0.0806 Ha	1270117
Lot 17 Deposited Plan 624962	Fee Simple Title	0.0806 Ha	1270118
Lot 18 Deposited Plan 624962	Fee Simple Title	0.0825 Ha	1270119
Lot 19 Deposited Plan 624962	Fee Simple Title	0.0847 Ha	1270120
Lot 22 Deposited Plan 624962	Fee Simple Title	0.0800 Ha	1270123
Lot 23 Deposited Plan 624962	Fee Simple Title	0.0800 Ha	1270124
Lot 24 Deposited Plan 624962	Fee Simple Title	0.0800 Ha	1270125
Lot 25 Deposited Plan 624962	Fee Simple Title	0.0800 Ha	1270126



Title Plan - LT 624962

Created Parcels

Parcels	Parcel Intent	Area	RT Reference
Lot 26 Deposited Plan 624962	Fee Simple Title	0.0800 Ha	1270127
Lot 27 Deposited Plan 624962	Fee Simple Title	0.0800 Ha	1270128
Lot 28 Deposited Plan 624962	Fee Simple Title	0.0801 Ha	1270129
Lot 29 Deposited Plan 624962	Fee Simple Title	0.1046 Ha	1270130
Lot 30 Deposited Plan 624962	Fee Simple Title	0.0998 Ha	1270131
Lot 31 Deposited Plan 624962	Fee Simple Title	0.0804 Ha	1270132
Lot 32 Deposited Plan 624962	Fee Simple Title	0.0952 Ha	1270133
Lot 33 Deposited Plan 624962	Fee Simple Title	0.0920 Ha	1270134
Lot 34 Deposited Plan 624962	Fee Simple Title	0.0822 Ha	1270135
Lot 35 Deposited Plan 624962	Fee Simple Title	0.0961 Ha	1270136
Lot 36 Deposited Plan 624962	Fee Simple Title	0.0981 Ha	1270137
Lot 37 Deposited Plan 624962	Fee Simple Title	0.0829 Ha	1270138
Lot 38 Deposited Plan 624962	Fee Simple Title	0.0825 Ha	1270139
Lot 39 Deposited Plan 624962	Fee Simple Title	0.0822 Ha	1270140
Lot 40 Deposited Plan 624962	Fee Simple Title	0.0600 Ha	1270141
Lot 41 Deposited Plan 624962	Fee Simple Title	0.0600 Ha	1270142
Lot 42 Deposited Plan 624962	Fee Simple Title	0.0601 Ha	1270143
Lot 43 Deposited Plan 624962	Fee Simple Title	0.0600 Ha	1270144
Lot 44 Deposited Plan 624962	Fee Simple Title	0.0601 Ha	1270145
Lot 45 Deposited Plan 624962	Fee Simple Title	0.0601 Ha	1270146
Lot 46 Deposited Plan 624962	Fee Simple Title	0.0601 Ha	1270147
Lot 47 Deposited Plan 624962	Fee Simple Title	0.0601 Ha	1270148
Lot 48 Deposited Plan 624962	Fee Simple Title	0.0616 Ha	1270149
Lot 49 Deposited Plan 624962	Fee Simple Title	0.0684 Ha	1270150
Lot 50 Deposited Plan 624962	Fee Simple Title	0.0605 Ha	1270151
Lot 51 Deposited Plan 624962	Fee Simple Title	0.0605 Ha	1270152
Lot 52 Deposited Plan 624962	Fee Simple Title	0.0605 Ha	1270153
Lot 53 Deposited Plan 624962	Fee Simple Title	0.0605 Ha	1270154
Lot 54 Deposited Plan 624962	Fee Simple Title	0.0603 Ha	1270155
Lot 55 Deposited Plan 624962	Fee Simple Title	0.0612 Ha	1270156
Lot 56 Deposited Plan 624962	Fee Simple Title	0.0602 Ha	1270157
Lot 57 Deposited Plan 624962	Fee Simple Title	0.0618 Ha	1270158
Lot 58 Deposited Plan 624962	Fee Simple Title	0.0650 Ha	1270159
Lot 59 Deposited Plan 624962	Fee Simple Title	0.0601 Ha	1270160
Lot 60 Deposited Plan 624962	Fee Simple Title	0.0614 Ha	1270161
Lot 61 Deposited Plan 624962	Fee Simple Title	0.0614 Ha	1270162
Lot 62 Deposited Plan 624962	Fee Simple Title	0.0614 Ha	1270163
Lot 63 Deposited Plan 624962	Fee Simple Title	0.0613 Ha	1270164
Lot 64 Deposited Plan 624962	Fee Simple Title	0.0613 Ha	1270165
Lot 65 Deposited Plan 624962	Fee Simple Title	0.0595 Ha	1270166
Lot 66 Deposited Plan 624962	Fee Simple Title	0.0633 Ha	1270167
Lot 67 Deposited Plan 624962	Fee Simple Title	0.0614 Ha	1270168
Lot 68 Deposited Plan 624962	Fee Simple Title	0.0614 Ha	1270169
Lot 69 Deposited Plan 624962	Fee Simple Title	0.0614 Ha	1270170



Title Plan - LT 624962

Created Parcels

Parcels	Parcel Intent	Area	RT Reference
Lot 70 Deposited Plan 624962	Fee Simple Title	0.0614 Ha	1270171
Lot 71 Deposited Plan 624962	Fee Simple Title	0.0614 Ha	1270172
Lot 72 Deposited Plan 624962	Fee Simple Title	0.0642 Ha	1270173
Lot 73 Deposited Plan 624962	Fee Simple Title	0.0633 Ha	1270174
Lot 74 Deposited Plan 624962	Fee Simple Title	0.0654 Ha	1270175
Lot 75 Deposited Plan 624962	Fee Simple Title	0.0638 Ha	1270176
Lot 76 Deposited Plan 624962	Fee Simple Title	0.0614 Ha	1270177
Lot 77 Deposited Plan 624962	Fee Simple Title	0.0606 Ha	1270178
Lot 78 Deposited Plan 624962	Fee Simple Title	0.0605 Ha	1270179
Lot 79 Deposited Plan 624962	Fee Simple Title	0.0606 Ha	1270180
Lot 80 Deposited Plan 624962	Fee Simple Title	0.0602 Ha	1270181
Lot 81 Deposited Plan 624962	Fee Simple Title	0.0630 Ha	1270182
Lot 82 Deposited Plan 624962	Fee Simple Title	0.0611 Ha	1270183
Lot 83 Deposited Plan 624962	Fee Simple Title	0.0637 Ha	1270184
Lot 84 Deposited Plan 624962	Fee Simple Title	0.0644 Ha	1270185
Lot 85 Deposited Plan 624962	Fee Simple Title	0.0644 Ha	1270186
Lot 86 Deposited Plan 624962	Fee Simple Title	0.0646 Ha	1270187
Lot 87 Deposited Plan 624962	Fee Simple Title	0.0655 Ha	1270188
Lot 88 Deposited Plan 624962	Fee Simple Title	0.0654 Ha	1270189
Lot 89 Deposited Plan 624962	Fee Simple Title	0.0656 Ha	1270190
Lot 100 Deposited Plan 624962	Vesting on Deposit for Local Purpose Reserve	0.1613 Ha	1270191
Lot 101 Deposited Plan 624962	Vesting on Deposit for Local Purpose Reserve	0.0116 Ha	1270192
Area G Deposited Plan 624962	Easement		
Area H Deposited Plan 624962	Easement		
Area I Deposited Plan 624962	Easement		
Area J Deposited Plan 624962	Easement		
Area K Deposited Plan 624962	Easement		
Lot 102 Deposited Plan 624962	Vesting on Deposit for Road	2.0131 Ha	
Lot 20 Deposited Plan 624962	Fee Simple Title	0.0822 Ha	
Lot 21 Deposited Plan 624962	Fee Simple Title	0.0800 Ha	
Area L Deposited Plan 624962	Easement		
Area M Deposited Plan 624962	Easement		
Total Area		8.4934 Ha	

Schedule / Memorandum

**Land registration district**

Otago

Survey number

DP 624962

Territorial authority

Queenstown Lakes District Council

Surveyor reference

W6000 – Koreke Rise

MEMORANDUM OF EASEMENTS			
PURPOSE	SHOWN	BURDENED LAND	BENEFITTED LAND
Right of way Right to convey water, electricity and telecommunications Right to drain water and sewage	G	Lot 36	Lot 35
	H	Lot 35	Lot 36
	I	Lot 32	Lot 30
	J	Lot 30	Lot 32
	K	Lot 29	Lot 28
Right to drain sewage	L	Lot 20	Lot 21

MEMORANDUM OF EASEMENTS IN GROSS			
PURPOSE	SHOWN	BURDENED LAND	GRANTEE
Right to convey telecommunications	G	Lot 36	Chorus New Zealand Limited
	H	Lot 35	
	I	Lot 32	
	J	Lot 30	
	K	Lot 29	
Right to convey electricity	G	Lot 36	Aurora Energy Limited
	H	Lot 35	
	I	Lot 32	
	J	Lot 30	
	K	Lot 29	

Schedule / Memorandum

MEMORANDUM OF EASEMENTS IN GROSS			
PURPOSE	SHOWN	BURDENED LAND	GRANTEE
Right to drain water and sewage	G	Lot 36	Queenstown Lakes District Council
	H	Lot 35	
	I	Lot 32	
	J	Lot 30	
	K	Lot 29	
Right to convey water and right to drain sewage	M	Lot 101	

SCHEDULE OF EXISTING EASEMENTS TO BE SURRENDERED				
PURPOSE	SHOWN	BURDENED LAND	BENEFITTED LAND	CREATED BY
Right of Way and Right to Drain Water	B, C & F DP 568764	Lot 2 DP 568764	Lot 1 DP 536086	EI 11532870.7
Right to Drain Sewage and Convey Water, Electricity and Telecommunications	B, C & E DP 568764	Lot 2 DP 568764		
Right of Way	A DP 568764	Lot 2 DP 568764	Lot 1 DP 300074	T. 5012466.5
Right to Convey Power, Telephone, Water and Drain Water and Sewage	A, C & D DP 568764	Lot 2 DP 568764		

EXISTING LAND COVENANTS

Lot 2 DP 568764 has existing land covenants created by covenant instruments; 11532870.4, 11532870.5, 11532870.6

EXISTING CONSENT NOTICE

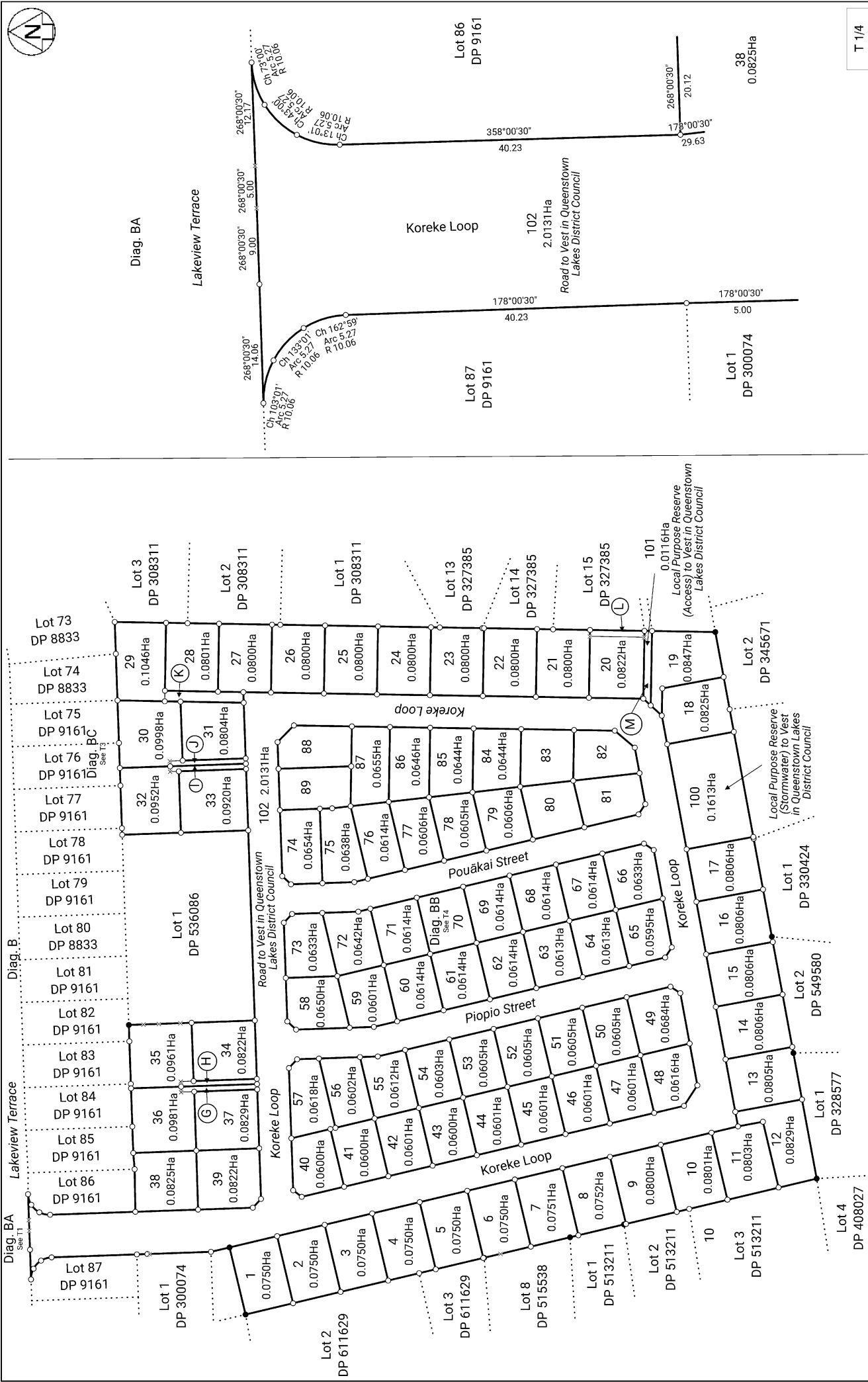
The existing consent notice (11532870.3) registered on Record of Title 1023391 is to be partially cancelled in so far as it relates to Lot 2 DP 568764 only, pursuant to section 221(3) of the RMA 1991.

NEW CONSENT NOTICE

A new consent notice is to be registered on the new titles of the relevant allotments.

NEW LAND COVENANT

A new land covenant is to be registered on the new titles of the relevant allotments.



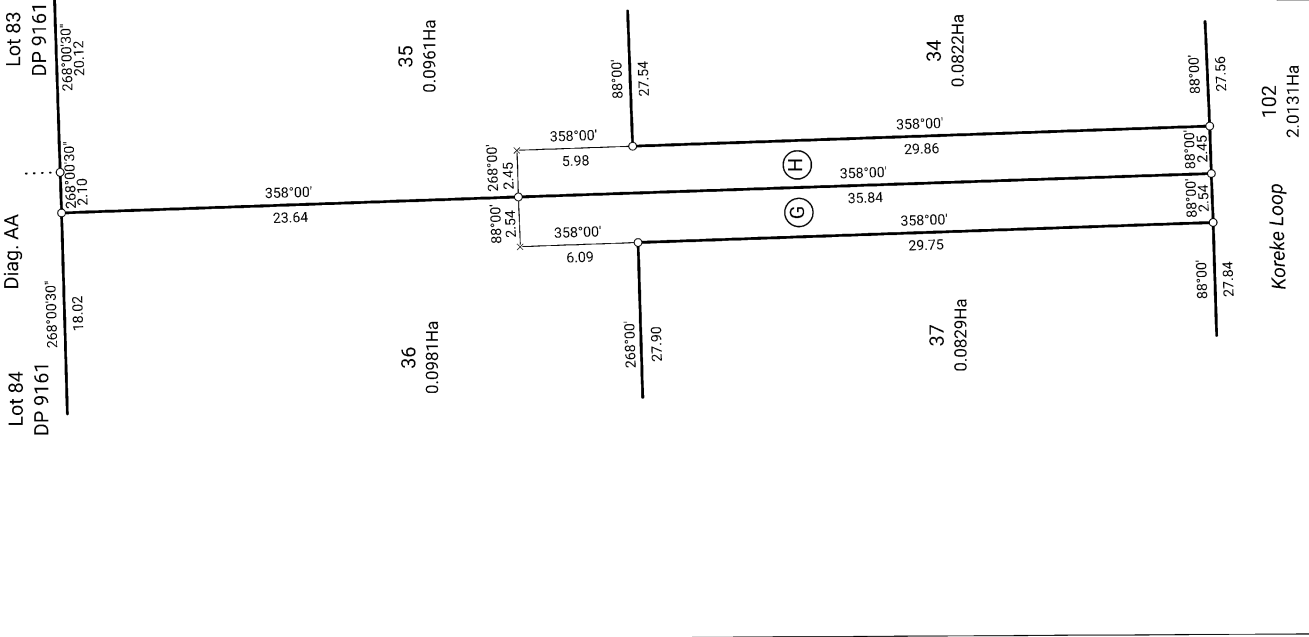
T 1/4

Title Plan
LT 624962
DRAFT

Surveyor: Kim Marie Botting
Firm: Paterson Pitts Limited Partnership (W)

Lots 1-89 and 100-102 being a subdivision of Lot 2 568764

Land District: Otago
Digitally Generated Plan
Generated on: 13/03/2026 06:53:36 Page 6 of 9

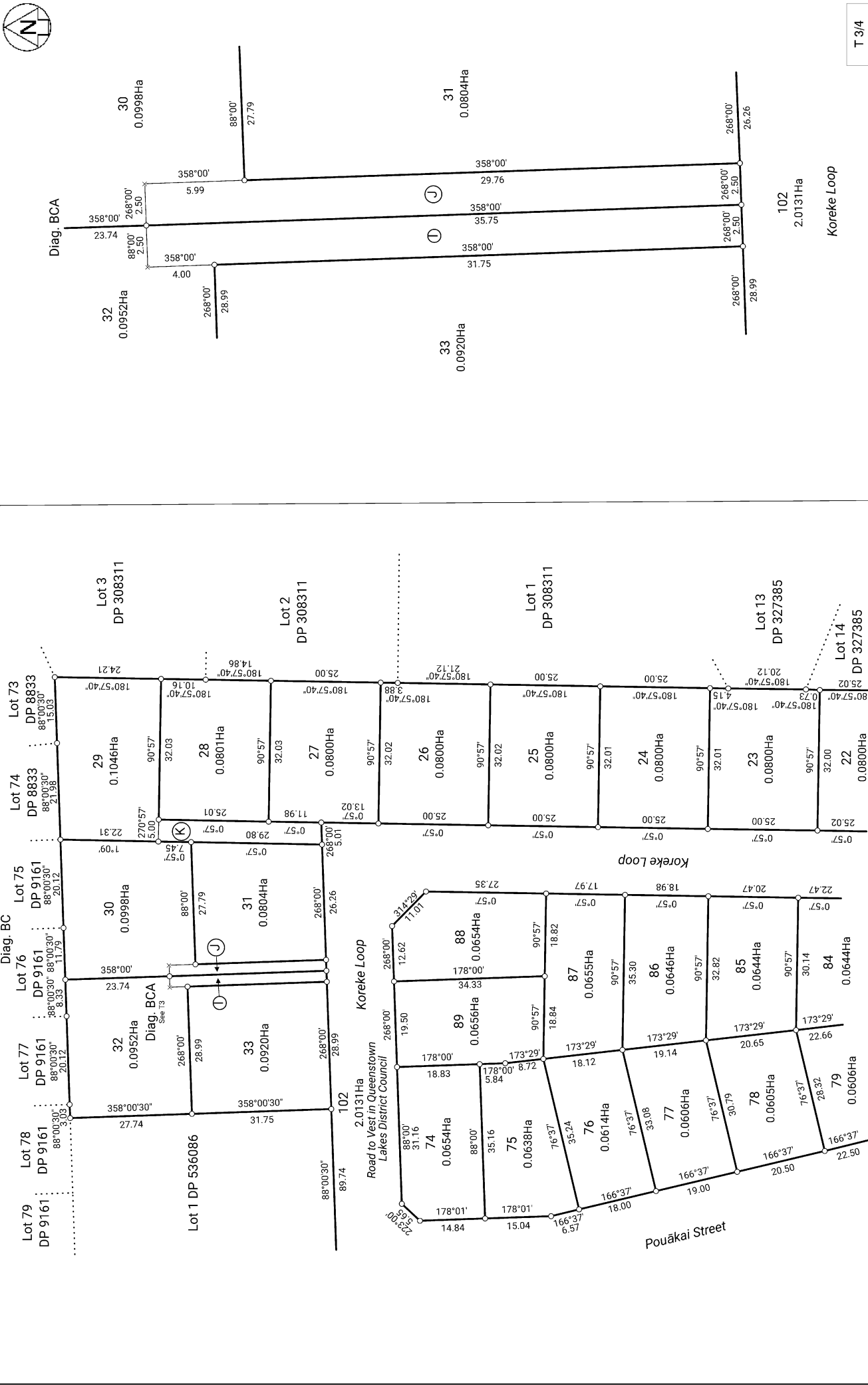


Title Plan
LT 624962
DRAFT

Surveyor: Kim Marie Botting
Firm: Paterson Pitts Limited Partnership (W)

Lots 1-89 and 100-102 being a subdivision of Lot 2 568764

Land District: Otago
Digitally Generated Plan
Generated on: 13/03/2026 06:53am Page 7 of 9



T 3/4

Surveyor: Kim Marie Botting
 Firm: Paterson Pitts Limited Partnership (M)

Title Plan
 LT 624962
 DRAFT

Lots 1-89 and 100-102 being a subdivision of Lot 2 568764

Land District: Otago
 Digitally Generated Plan
 Generated on: 13/03/2026 06:53am Page 8 of 9



Diag. BB

T 4/4

Title Plan
 LT 624962
 DRAFT

Surveyor: Kim Marie Botting
 Firm: Paterson Pitts Limited Partnership (W)

Lots 1-89 and 100-102 being a subdivision of Lot 2 568764

Land District: Otago
 Digitally Generated Plan
 Generated on: 13/03/2026 06:53:01 Page 9 of 9